

.OCTANORM
INTERIOR DESIGN
EXAMPLES.

.OCTANORM
LADENBAU
DESIGN BEISPIELE.

EDITION NO. 1



exhibition systems
interior design systems
presentation systems
software and service

THE
WORLD
OF
SYSTEMS

OCTANORM 

**.FUNCTION
& FORM - THAT'S
OCTANORM.**



MAXIMA-LIGHT M 235/M 205
MAXIMA-LIGHT M 235/M 205

MAXIMA-LIGHT S 2300
MAXIMA-LIGHT S 2300

MAXIMA-LIGHT M 1220
MAXIMA-LIGHT M 1220





MAXIMA-LIGHT M 1040
MAXIMA-LIGHT M 1040

MAXIMA-LIGHT M 1022
MAXIMA-LIGHT M 1022

MAXIMA-LIGHT M 1025
MAXIMA-LIGHT M 1025

MAXIMA-LIGHT M 1358
MAXIMA-LIGHT M 1358



**.FUNCTION
& FORM - THAT'S
OCTANORM.**



MAXIMA-LIGHT M 1020
MAXIMA-LIGHT M 1020

NEWLINE SHOP S 3100
NEWLINE SHOP S 3100

EXHIBITION SYSTEM Z 400
MESSEBAUSYSTEM Z 400





MAXIMA-LIGHT M 1020
 MAXIMA-LIGHT M 1020

MAXIMA-LIGHT M 1010
 MAXIMA-LIGHT M 1010

MAXIMA-LIGHT M 1465/M 1469
 MAXIMA-LIGHT M 1465/M 1469

MAXIMA-LIGHT M 1500
 MAXIMA-LIGHT M 1500



**.FUNCTION
& FORM - THAT'S
OCTANORM.**



MAXIMA-LIGHT S 2305
MAXIMA-LIGHT S 2305

MAXIMA-LIGHT M 1625
MAXIMA-LIGHT M 1625

NEWLINE CORPUS V 2000
NEWLINE CORPUS V 2000

EXHIBITION SYSTEM S 303
MESSEBAUSYSTEM S 303



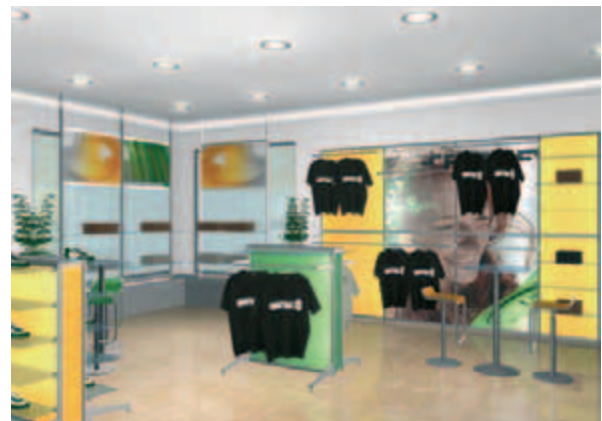
**.FUNCTION
& FORM - THAT'S
OCTANORM.**



NEWLINE SHOP S 3100
NEWLINE SHOP S 3100

NEWLINE SHOP S 3500
NEWLINE SHOP S 3500

NEWLINE SHOP E 2150
NEWLINE SHOP E 2150



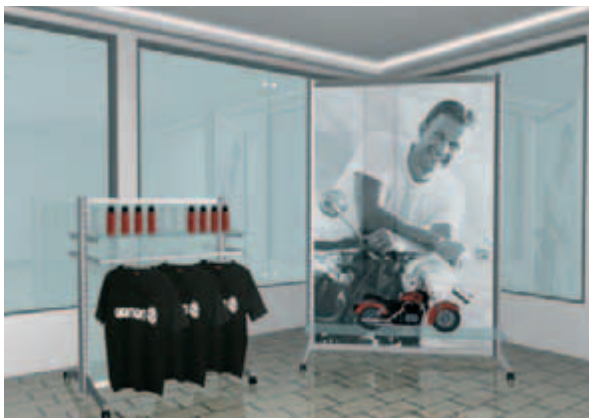


NEWLINE SHOP S 3500
 NEWLINE SHOP S 3500

NEWLINE SHOP E 2150
 NEWLINE SHOP E 2150

MAXIMA-LIGHT M 1010
 MAXIMA-LIGHT M 1010

MAXIMA-LIGHT M 1358
 MAXIMA-LIGHT M 1358



**.FUNCTION
& FORM - THAT'S
OCTANORM.**



**NEWLINE SHOP
NEWLINE SHOP**

**S 6105
S 6105**

**NEWLINE SHOP
NEWLINE SHOP**

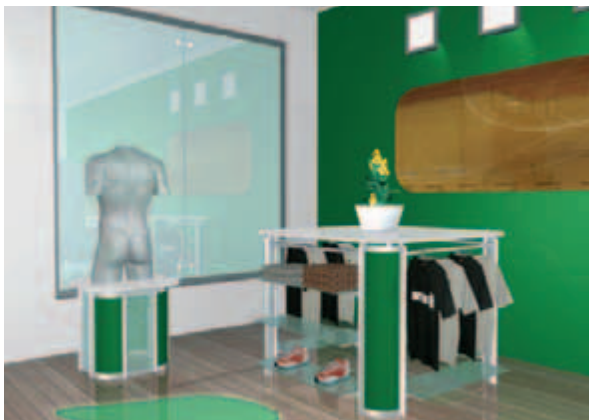
**S 6218/6210
S 6218/6210**

**MAXIMA-LIGHT
MAXIMA-LIGHT**

**M 1320
M 1320**

**MAXIMA-LIGHT
MAXIMA-LIGHT**

**M 1392
M 1392**



**.FUNCTION
& FORM - THAT'S
OCTANORM.**



MAXIMA-LIGHT M 1800
MAXIMA-LIGHT M 1800

NEWLINE CORPUS M 1625
NEWLINE CORPUS M 1625

NEWLINE CORPUS V 2000
NEWLINE CORPUS V 2000

NEWLINE CORPUS S 1125
NEWLINE CORPUS S 1125





MAXIMA-LIGHT
MAXIMA-LIGHT

M 225
M 225

MAXIMA-LIGHT
MAXIMA-LIGHT

M 1368/M 1415
M 1368/M 1415

MAXIMA-LIGHT
MAXIMA-LIGHT

M 1000
M 1000

MAXIMA-LIGHT
MAXIMA-LIGHT

GLASS RETAINER
GLASHALTER

NEWLINE SHOP
NEWLINE SHOP

H 200/H 205
H 200/H 205



**.FUNCTION
& FORM - THAT'S
OCTANORM.**

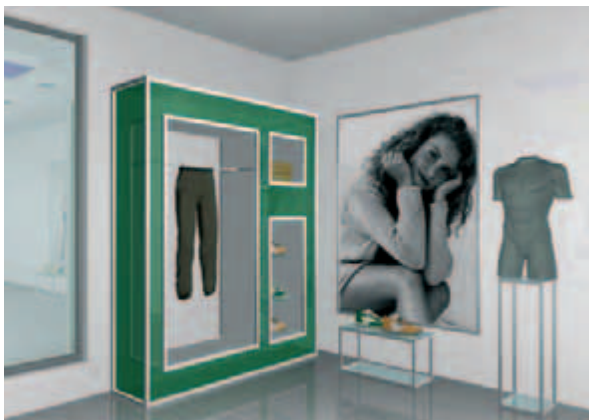


MAXIMA-LIGHT M 1800
MAXIMA-LIGHT M 1800

NEWLINE CORPUS S 1125
NEWLINE CORPUS S 1125

NEWLINE CORPUS V 2000
NEWLINE CORPUS V 2000

NEWLINE CORPUS M 1625
NEWLINE CORPUS M 1625





MAXIMA-LIGHT M 1060/M 1030
 MAXIMA-LIGHT M 1060/M 1030

MAXIMA-LIGHT M 1448/M 1449
 MAXIMA-LIGHT M 1448/M 1449

SLOTTED INSERT RAIL E 750
 LOCHSCHIENE E 750

NEWLINE CORPUS V 2000
 NEWLINE CORPUS V 2000



**.FUNCTION
& FORM - THAT'S
OCTANORM.**



NEWLINE SHOP S 6100/S 6105
NEWLINE SHOP S 6100/S 6105

MAXIMA-LIGHT M 1210
MAXIMA-LIGHT M 1210

NEWLINE CORPUS V 2000
NEWLINE CORPUS V 2000

NEWLINE CORPUS M 1625
NEWLINE CORPUS M 1625



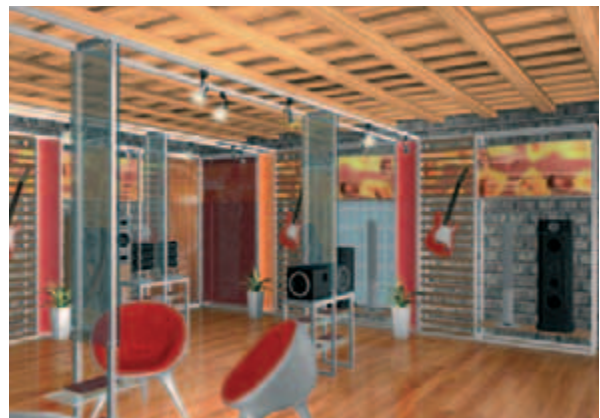


MAXIMA-LIGHT M 1010
 MAXIMA-LIGHT M 1010

MAXIMA-LIGHT M 1380/M 1390
 MAXIMA-LIGHT M 1380/M 1390

MAXIMA-LIGHT M 1448/M 1449
 MAXIMA-LIGHT M 1448/M 1449

MAXIMA-LIGHT M 1356
 MAXIMA-LIGHT M 1356



**.FUNCTION
& FORM - THAT'S
OCTANORM.**



MAXIMA-LIGHT M 1800
MAXIMA-LIGHT M 1800

MAXIMA-LIGHT M 1030
MAXIMA-LIGHT M 1030

MAXIMA-LIGHT M 1358
MAXIMA-LIGHT M 1358

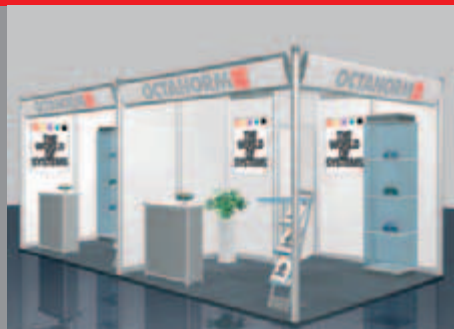


• OCTANORM
INTERIOR DESIGN
EXAMPLES.

• OCTANORM
LADENBAU
DESIGN BEISPIELE.

EDITION NO. 1

exhibition systems
interior design systems
presentation systems
cleanroom systems
software and service



OCTANORM
DESIGN EXAMPLES

OCTANORM
DESIGN BEISPIELE

EDITION NO. 1
EDITION NO. 2

DESIGNED BY JENS STRÄTER
www.straeter-objektdesign.de

OCTANORM
SHELL SCHEMES

OCTANORM
GEMEINSCHAFTSSTÄNDE

EDITION NO. 1

DESIGNED BY JENS STRÄTER
www.straeter-objektdesign.de

OCTANORM
DISPLAY-ARCHITECTURE

OCTANORM
DISPLAY-ARCHITEKTUR

EDITION NO. 1
EDITION NO. 2

DESIGNED BY
THERESE FORSBERG

7917_INTERIOR DESIGN EXAMPLES_ED.1_07/2006

THE
WORLD
OF
SYSTEMS

OCTANORM®-Vertriebs-GmbH für Bauelemente
Raiffeisenstrasse 39 ☼☼☼ D-70794 Filderstadt
Tel: +49(711)77003-0 ☼ Fax: +49(711)77003-53
info@octanorm.de ☼ www.octanorm.com ☼ Amtsgericht
Stuttgart, HRB 225076 ☼ Geschäftsführer: Hans Bruder

OCTANORM 